

# RAMMER 1322E



EXCELLENCE LINE

FACTORY  
INSTALLED  
RD3 FOR  
MYFLEET

CBE (CONSTANT  
BLOW ENERGY)

MEMBRANE TYPES  
ACCUMULATORS

TWO ROUND TOOL RETAINING  
PINS WITH SIMPLE LOCKING  
RINGS

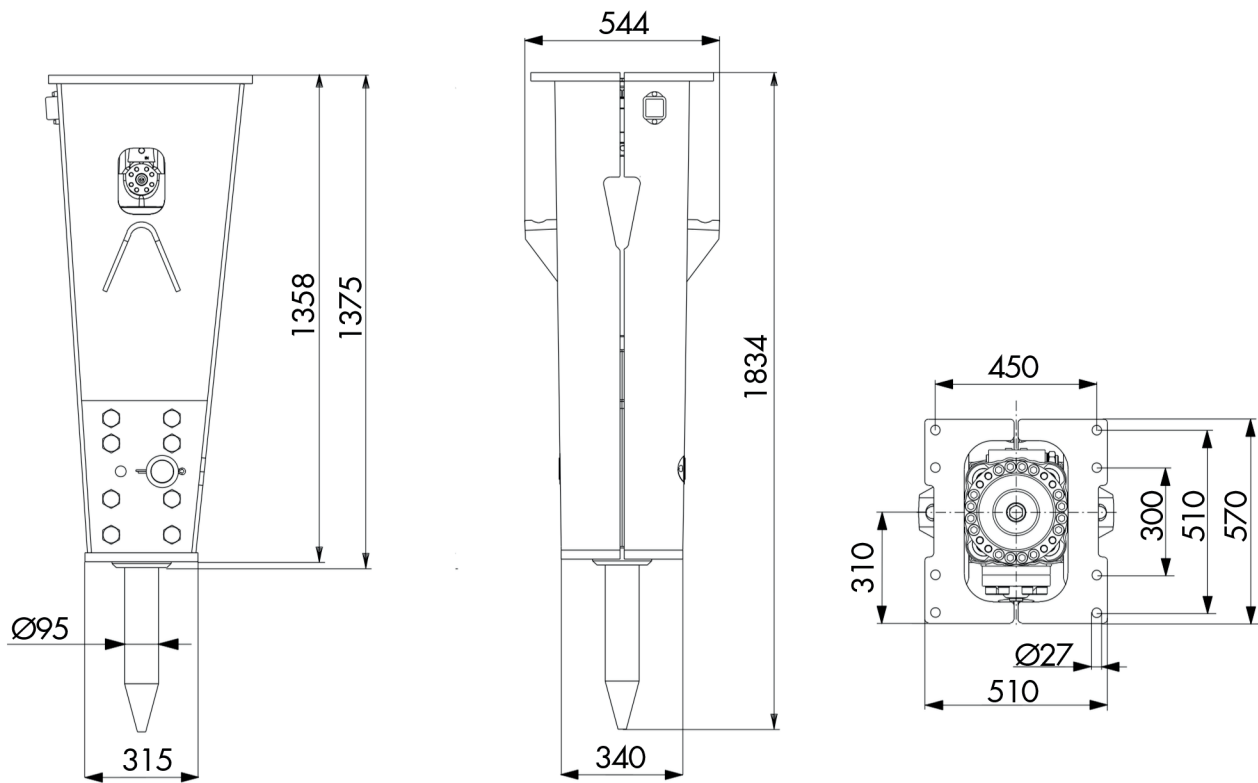
FIELD REPLACEABLE LOWER  
TOOL BUSHING WITH EASY  
LOCKING PLUGS

## EXCELLENCE LINE HITS SMARTER

The Rammer Excellence Line is a set of state-of-the-art hydraulic hammers for all your rock breaking needs. All Excellence Line hammers now have integrated smart technology for easier fleet management and more efficient processes.

Read more about the product from  
[www.rammer.com/excellence](http://www.rammer.com/excellence)

**Ram  
mer**<sup>®</sup>



## SPECIFICATIONS

Minimum working weight, flange mounted, kg (lb)	850 (1870)
Impact rate, bpm	500-1000
Operating pressure, bar (psi)	125-150 (1815-2175)
Pressure relief, max bar (psi)	220 (3190)
Oil flow range, l/min (gal/min)	60-120 (15.9-31.7)
Back pressure, max bar (psi)	20 (290)
Input power, kW (hp)	32 (43)
Tool diameter, mm (in)	95 (3.74)
Excavator weight, allowed range t (lb)	9-15 (19800-33100)
Skid steer, robot weight, allowed range t (lb)	-
Noise level, measured sound power level, LWA dB	136
Noise level, guaranteed sound power level, LWA dB	140

## TOOLS

Chisel	Spade
Moil point	Compacting plate
Blunt	

## PARTS

Service kit 1
Special tool grease

Specifications are subject to change without notice

**GROUND TEC**  
EQUIPMENT

**Sydney**  
Ground Tec Equipment  
16 Garema Cct, Kingsgrove NSW 2208

**Newcastle**  
Ground Tec Equipment  
27 Jura St, Heatherbrae NSW 2324

**Rammer**<sup>®</sup>

Contact : 02 9642 2030 / breakers@groundtec.com.au